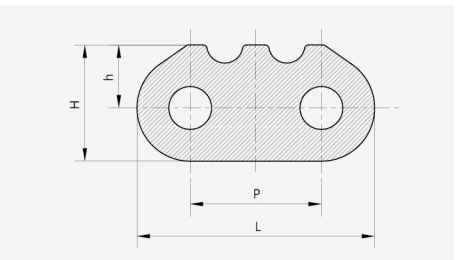
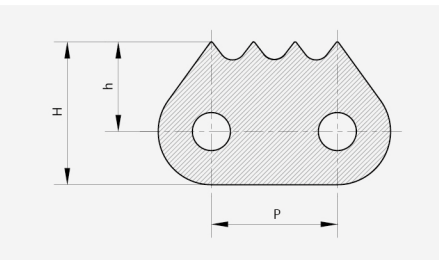
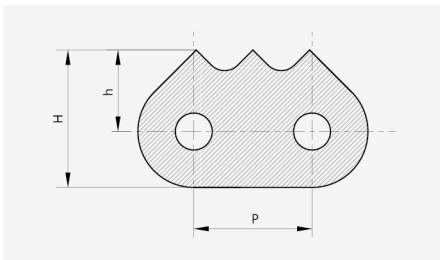
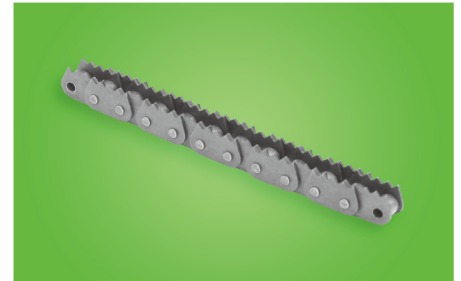
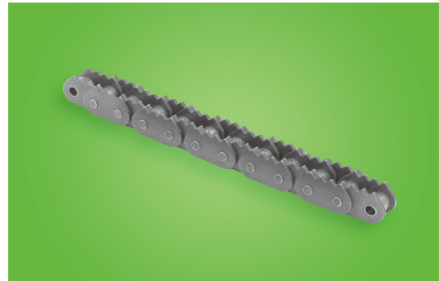




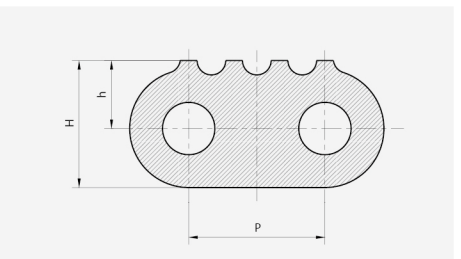
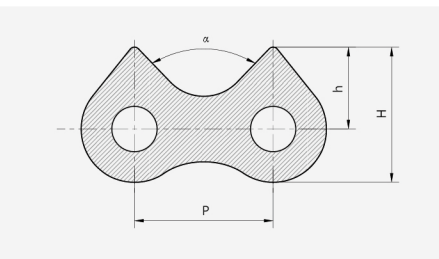
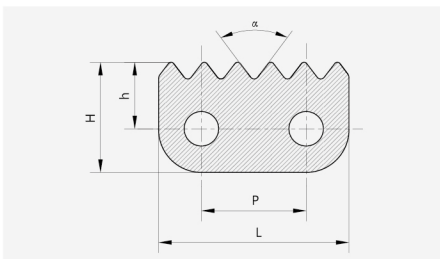
# Sharp Top Chain



Chain No.	P [mm]	h [mm]	H [mm]
C16AF1	25.4	17.5	29.5
C16A-3PEP	25.4	17.4	29.0
C16BF3	25.4	18.7	29.2

Chain No.	P [mm]	h [mm]	H [mm]
C16A-1170	25.4	16.5	28.0
16B-1170	25.4	16.0	26.5
16B-1172	25.4	15.0	25.5
C24B-4STC	38.1	18.3	35.0

Chain No.	P [mm]	L [mm]	h [mm]	H [mm]
16B-1180	25.4	46	12.2	22.5



Chain No.	P [mm]	L [mm]	h [mm]	H [mm]	$\alpha$
16B-1185	25.4	46.0	16.0	26.5	75.0°
16B-6STC	25.4	46.0	16.0	26.5	73.4°

Chain No.	P [mm]	h [mm]	H [mm]	$\alpha$
16B-2STCF1	25.40	15.0	24.75	88.0°
20A-2STCF1	31.75	23.0	35.95	80.0°
20A-2STCF3	31.75	23.0	35.95	82.4°

Chain No.	P [mm]	h [mm]	H [mm]
24B-1810	38.1	19.0	35.5
24A-1802	38.1	21.0	38.5